



FOOTNOTES



Board Meetings

The Board meets at 7:00 PM on the first Wednesday of each month September through June in Room 406/408 of the Catalina Foothills Church, 2150 E. Orange Grove Road, Tucson, AZ, 85718. During this pandemic our meetings are conducted via Video Teleconference. We allow a ten-minute period at the beginning of each monthly meeting for “Resident Related Issues.” Contact the Board Secretary, 323-9299, two weeks before the scheduled meeting.

Dates for 2020: Nov. 4th and Dec. 2nd.
 Dates for 2021: Jan. 6th, Feb. 3rd, Mar. 3, Apr. 7th, May 5th, June 2nd, Sept 1st, Oct. 6th, Nov. 3rd and Dec.1st.

Please check with the Board Secretary to confirm an upcoming meeting date and time and for directions to the meeting location or to receive a Zoom link.

CFE7 Annual Meeting

Due to the uncertainty caused by the Pandemic the 2021 Annual Meeting has not been finalized. Our usual venue is not yet scheduling events. But for planning purposes the date will either be the 6th or the 13th of February 2021. If we can't get into the St. Philip's Gallery, we will conduct the meeting via Zoom. Please stay tuned...

Board Elections

The Association members will elect board members at the upcoming election in February 2021. There will be five vacancies to be filled. Currently three residents have volunteered to be on the ballot. We still need two or more willing members to volunteer to be on the ballot. Positions on the Board are three-year terms and can be held for two consecutive terms.

If you would like to take part in serving your community or would like more information on becoming a Board member, please call the Secretary (323-9299) who will pass your name to the nominating committee. Ultimately, the CFE7 property owners determine the future of the Association and our neighborhood. Consider investing in that future by joining our Board of Directors.

**Please welcome our
New Neighbors!**

*Douglas/Misty Arnold
5122 N Soledad Primera*

*Scott/Diana Summerford
1776 E Calle del Cielo*

*Karen McFall
1520 E Via Soledad*

*Benjamin/Jasmine Levine
1501 E Via Soledad*

*Corydon/Michelle Marrs
1845 E Camino Cresta*

*Timothy/Laurie Neal
5020 N Via Condesa*

*James/Antoinette Brown
5545 N Entrada Quince*

*Mathew Aron
5550 N Entrada Ultima*

*Nathan Douglas
Agnes Poore
5325 N Calle La Cima*

*Brian Burnett
Dani Longoria
5251 N Via Condesa*

*Jay/Michelle Sampson
5435 N Via Entrada*

*Tiffany Callahan
1322 E Condesa Primera*

*Calvin (Pete)/Diann Bennett
1210 E Condesa Tercera*

*Patrick Henderson
4961 N Calle Luisa*

Neighborhood Clean-Up Day

Saturday —

February 20 2020 8:30 am

Meet — corner of Via Entrada and Foothills Dr.

Help clean-up our neighborhood and meet your neighbors at the same time during our Community Clean-up Day. You'll receive a plastic garbage bag and will pick up cans, bottles, papers, and trash from the sides of the road and the medians for your chosen section. You will leave the bag on the median for pick-up the following week. Please wear a hat, gloves, and bring water. Your assistance will keep our neighborhood looking its best! Trash bags and safety vests will be supplied. For more information call Julie Kelly at (520) 333-9030.

Landscaping Update

In keeping the aesthetic value of our community, the board is again addressing needed work in the medians. As with past projects, trimming will be done judiciously. Dead material will be removed; however, healthy trees and vegetation, and the desert floor, will remain untouched. Work will begin on First Avenue and Via Entrada, and will continue into next year, and yearly after that. A full schedule will be presented at the annual meeting. The board asks that residents use caution when driving near medians when work is ongoing. Please contact Julie Kelly at (520) 333-9030 with any questions.

Parking Reminder

As a reminder to residents, our community has specific restrictions on vehicle parking. The restrictions are captured in Article 3.16 of our Protective Covenants which states:

“3.16. Parking Requirements. Operative passenger vehicles may be parked unrestricted on any Lot. All other vehicles, including, but not limited to boats, trailers, commercial and construction vehicles, shall not be parked or placed on a Lot for any period in excess of four 2- day periods in any one calendar month, unless parked or placed within an enclosed structure approved by the PRC. Such 2-day periods shall not run consecutively. As used in this Section, the term “day” shall mean a full 24-hour day or any part thereof. Out-of-area visitors with above-described vehicles may be accommodated for periods not to exceed 7 days in a 6-month period by providing the Association with information stating the time and duration of the visit.”

Bus Conversions, Classes A thru C RV's, Camper Vans, Truck Campers, and all non-motorized RV's (5th wheels, camper trailers, and other trailers) are subject to the parking restrictions

The Need for Bursage

Triangleleaf bursage, *Ambrosia Deltoidea*, is the main understory plant for the desert around Phoenix and Tucson and one of the essential and crucial species in the Sonoran Desert. They are a no-maintenance shrub in the native desert environment. They preserve bare slopes from erosion, few vertebrates browse them, and they don't seem to host many insects. But their overwhelming value is that they are one of the main

nurse plants for fel-low desert plants. The seedlings of most desert plants cannot survive the extreme



Triangle Leaf Bursage

environmental conditions in exposed ground; they must start life in the shade and protection of a nurse plant. Palo verdes, saguaros, mammillarias and other desert seedlings rely on the bursage to grow to adulthood. Removing bursage from a CFE7 yard means that yard cannot regenerate itself, that few to no new trees, saguaros and cactus will grow and rejuvenate the desert in that location. Also, removal of bursage deprives small reptiles, cottontail rabbits, gambrel quails, and other mammals shelter from the sun and cover from predators. That in turn reduces food



White Bursage

sources for larger animals such as bobcats and road-runners that prey on the smaller animal life. In this way, that yard now represents yet another drop in the bucket of lost desert habitat. Don't remove bursage that is located more than 15' from your residence. The desert flora and fauna rely on you sharing your property.

Revised Fine Procedures

The Board of Directors revised the resolution that allows it to assess fines against property owners who violate the Protective Covenants. The original resolution did not adequately assess fines for improper use of a property. Fines for business uses were limited to \$45 per week while the offending party may be earning over \$700 per week because of the violation. The revised schedule of fines includes a fine for Residential Use violations. It also reflects the specific provisions of the Governing Documents that are covered under each fine and provides for higher fines for subsequent violations. The goal of the fine process is to encourage compliance with our protective Covenants. In order to be effective, the fine must be sufficient enough to discourage non-compliance. The entire document can be found on the CFE7 website, cfe7.org.

2021 Annual Assessment Changes

Beginning January 2020, a new bookkeeping system was instituted by CFE 7. The new program allows the CFE 7 treasurer to create invoices for annual assessments and statements to report to homeowners the status of their balance owed. In addition, CFE 7 can now electronically deliver invoices and statements rather than solely through mail. The Board appreciates your patience as we establish this new billing system.

When will the assessment be billed?

An assessment of \$100.00 will be billed in January 2021.

How will you receive the bill?

Check your mailbox mid-January for the Catalina Foothills Estate No. 7 (CFE 7) envelope. The main organization Catalina Foothills Association also sends their request for voluntary dues around the same time. Because both envelopes and information appear similar, it can be confusing. CFE 7 dues are mandatory and are applied directly to our neighborhood.

What if I want my bill delivered electronically?

You will be able to elect electronic billing by completing a form to indicate the email address you wish your bill to be sent and provide authorization by signing the form.

How can I pay?

As in the past, you may send your payment through the mail to P.O. Box 64173, Tucson, AZ 85728. Another option is to use Zelle pay with payment directed to treasurer@cfe7.org.

Who do I contact with questions?

Members are encouraged to contact the treasurer (treasurer@cfe7.org) or secretary (323-9299) with any questions.

Mistletoe, Just the Facts

Mistletoes (*phoradendron californicum*) are a native and natural part of the desert ecology. They are parasitic flowering plants with characteristic clumps of aerial shoots that are easily visible on the host plant. True mistletoes contain chlorophyll and carry on photosynthesis but being a parasite, it also lives off the nutrients of the host plant. The seeds are disseminated by birds, germinate on the host plant and penetrate directly by root-like structures that become progressively buried in the host wood. These structures enable the mistletoe to acquire water and nutrients from the host. Mistletoes develop inside the host for up to two years before sending out aerial shoots and developing the characteristic clump. Removal of the clump or the branch with the clump does not kill the mistletoe as it continues to grow inside the wood. Vigor of mistletoe is usually related to that of the host, and it may decline in otherwise healthy trees during dry periods when host plants are water stressed. On the other hand, heavily infected trees are probably more susceptible to other stresses and insect infections. Mistletoes are not aggressive pathogens and it can take decades for mature, infested trees to die. Young or small trees are seldom infected because birds prefer to perch in the tops of taller and/or more mature trees. Therefore, planting young trees near older infested trees before they are removed, or die is recommended.

So, what good is mistletoe? Mistletoe berries are a primary food source of desert birds and the clumps provide roosting, nesting, and security for them. Removal of great swathes of mistletoe from an area will reduce bird populations. Since removal of mistletoe does not rid the host tree of the parasite and negatively impacts the bird population, removal becomes mainly an issue of aesthetics. If the mistletoe in your tree is getting to be too much or the clumps too big which can pull down a limb, trim it out, but leave some behind for the birds.

Sources:

Arizona Cooperative Extension Publication AZ1308, revised 01/11

<https://heiahoa.org/site%20images/Mistletoe.pdf>

Arizona Cooperative Extension Publication AZ1429, revised 04/12

<https://extension.arizona.edu/sites/extension.arizona.edu/files/pubs/az1429.pdf>

Audubon Guide to North American Birds, <https://www.audubon.org>



JUNE Le CLAIR-BUCKO In Memoriam



Our June wore many CFE7 hats, as “Artist in Residence,” we would see her leaning on a ladder above prickly pear cactus restoring our street signs and every few years we would see her repainting the sign at River Road and Via Entrada. She also was our favorite “CFE7 Neighborhood Watch Leader” which she started up on her own in 2007 and was the head of until her death in May 2020. With a pencil behind her ear she was Editor and often the Writer of the CFE7 Footnotes Newsletter. For more than 10 years writing stories about our local fauna and flora, etc. and trying to share what easterners and westerners alike could expect in their new homes. While serving on the Board from 2002-2009 and being Covenants Chairperson from 2005-2007, she gently tried to educate/remind people about our trash bin policy by taping a friendly/funny post card on their trash bins as a reminder that they should not be visible.

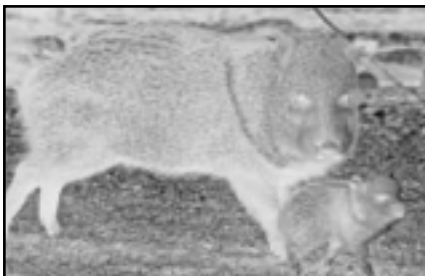


I am sure most of you are already smiling with wonderful memories of stopping and talking with June during many of these activities and remembering all these things she contributed to in making CFE7 the community it is. Please read her wonderful/descriptive article “What I learned....Hanging from a Street Sign! in the October 2008 Footnotes Newsletter which can be found on our website www.CFE7.org under Newsletters. June Le Clair and Rich Bucko moved into their home at 5548 N Via Entrada in the Spring 2000 when they found their perfect home in CFE7. She not only settled into our community but became an active participant serving on the Board, filling many positions and when her term was completed, she remained active as a resident participant. She also served for three years on the Catalina Foothills Association as the CFE7 representative.

We shall miss you June and thank you for all your contributions.

Remember! PLEASE don't feed the Wildlife!

The opportunity to live in harmony with various forms of wildlife, is a benefit that distinguishes CFE7 from other neighborhoods. We often see javelina, bobcat, coyotes, and other animals in our community. Unfortunately, some residents feel compelled to feed and water them.



Most people who feed wildlife are under the impression that they are doing something positive. However, introducing wildlife to a human

food source inevitably leads to conflicts with people and can result in serious harm in some cases. Feeding wildlife can cause problems such as obesity and malnutrition and can promote the spread of disease. Providing food, water or a habitat can cause them to become regular visitors or semi-permanent inhabitants. They will lose their fear of people, creating problems for the neighborhood and often leading to the death of the animal.

Some very important advice is:

NEVER FEED THE WILDLIFE (it's the law)!!

Don't provide them a watering hole!! Don't provide them a habitat!! If we all adhere to that advice the wildlife will typically wander through, eat a few prickly pear, or eat a few smaller animals, and go on their merry way.